

## Sophos XGS Series 2U: Enterprise Edge

Distributed and growing enterprises who require maximum throughput for even the most complex network get no-compromise protection, performance, and business continuity with these next-gen firewalls. The new Xstream Flow Processors provide dedicated hardware acceleration to easily handle full-on protection for today's encrypted, cloud-hosted applications and traffic. These models strike the perfect balance between port density and modularity, with a range of high-speed, built-in ports, plus additional high-density Flexi Port modules available to extend connectivity even further.

All models are powered by a high-speed CPU plus a dedicated Xstream Flow Processor for hardware acceleration.

### Product Highlights

- Dual processor architecture with dedicated co-processor for hardware acceleration
- Built to power all key threat protection features such as TLS inspection, sandboxing and AI-driven threat analysis
- Excellent price to performance ratio
- A range of standard 1 GE copper plus 8 to 12 SFP+ 10 GbE fiber interfaces on-board
- Optional standard and high-density Flexi Port modules available to extend and adapt connectivity
- Maximum port density of 48 [XGS 5500] or 68 [XGS 6500] using optional modules
- Redundancy features on all models ensure business continuity

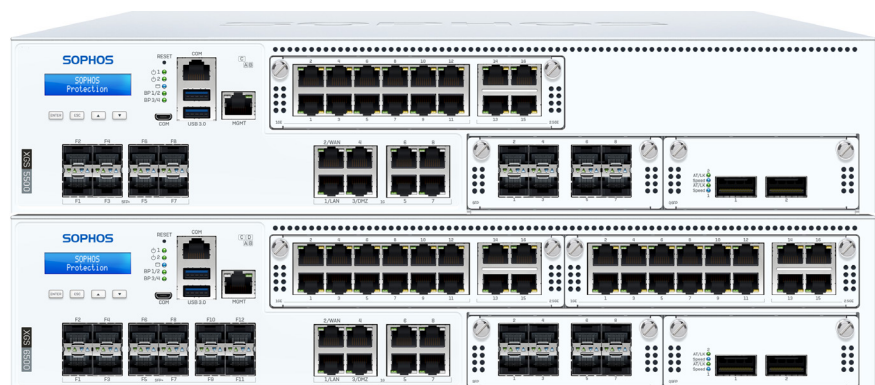
### Product Highlights

#### XGS 5500

See detailed [technical specifications](#)

#### XGS 6500

See detailed [technical specifications](#)

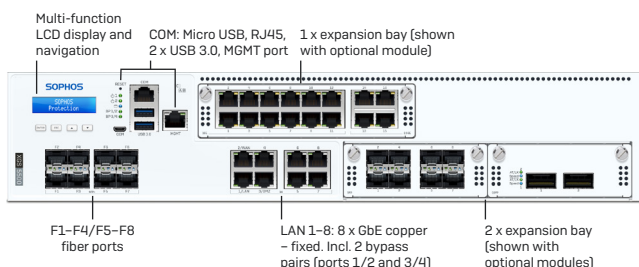


# Sophos XGS Series 2U: Enterprise Edge

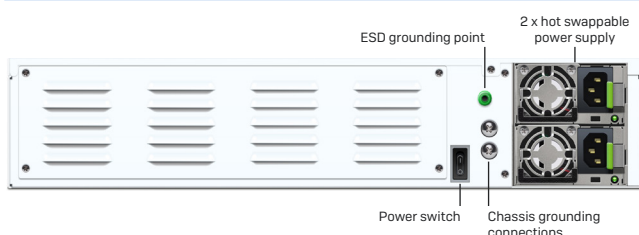
## XGS 5500

### Technical Specifications

#### Front View



#### Back View



#### Physical specifications

Mounting	2U sliding rails (included)
Dimensions Width x Height x Depth	438 x 88 x 660 mm
Weight	17.8 kg/39.24 lbs (unpacked) 27 kg/59.53 lbs (packed)

#### Environment

Power supply	2 x hot-swap internal auto-ranging 100-240VAC, 50-60 Hz PSU
Power consumption	168.0W/573.81 BTU/h (idle) 478.01W/1117.43 BTU/h (max.)
Operating temperature	0°C to 40°C (operating) -20°C to +70°C (storage)
Humidity	10% to 90%, non-condensing

#### Product Certifications

Certifications	CB, CE, UL, FCC, ISSED, VCCI, CCC, KC*, BSMI, RCM, NOM, Anatel*
----------------	---

\* Certification may not be available from launch

Performance	XGS 5500*
Firewall throughput	100,000 Mbps
Firewall IMIX	52,000 Mbps
Firewall Latency (64 byte UDP)	5 µs
IPS throughput	40,000 Mbps
Threat Protection throughput	12,390 Mbps
Concurrent connections	32,400,000
New connections/sec	468,000
IPsec VPN throughput	-
Xstream SSL/TLS Inspection	13,500 Mbps
Xstream SSL/TLS Concurrent connections	512,000

\* Expected soon

Note: For performance testing methodology see [page 12](#)

#### Physical interfaces

Storage (local quarantine/logs)	2 x min. 480 GB SATA-III SSD HW RAID built into CPU
Ethernet interfaces (fixed)	8 x GbE copper 8 x SFP+ 10 GbE fiber*
Bypass port pairs	2
Management ports	1 x RJ45 MGMT 1 x COM RJ45 1 x Micro-USB (cable incl.)
Other I/O ports	2 x USB 3.0 (front)
Number of Flexi Port slots	2 + 1 for high-density module
Flexi Port modules (optional)	8 port GbE copper 8 port GbE SFP fiber 4 port 10 GbE SFP+ fiber 4 port GbE copper bypass (2 pairs) 2 port 40 GbE QSFP+ fiber 8 port 10 GbE SFP+ fiber High-density module (NIC): 12 port GE copper + 4 port 2.5 GE copper
Max. total port density (incl. use of modules)	48
Optional add-on connectivity	SFP DSL module (VDSL2) SFP/SFP+ Transceivers
Display	Multi-function LCD module

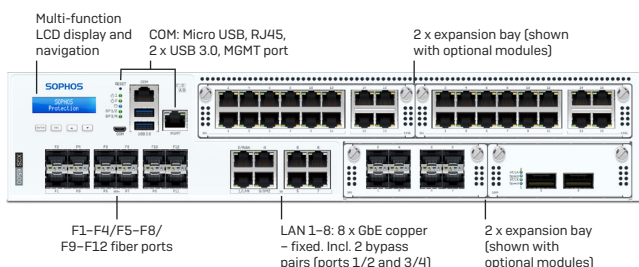
\* Transceivers (mini GBICs) sold separately

# Sophos XGS Series 2U: Enterprise Edge

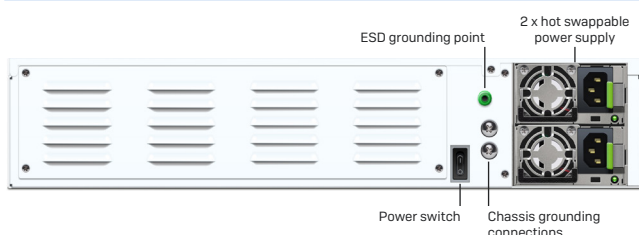
## XGS 6500

### Technical Specifications

#### Front View



#### Back View



#### Physical specifications

Mounting	2U sliding rails (included)
Dimensions Width x Height x Depth	438 x 88 x 660 mm
Weight	17.8 kg/39.24 lbs (unpacked) 27 kg/59.53 lbs (packed)

#### Environment

Power supply	2 x hot-swap internal auto-ranging 100-240VAC, 50-60 Hz PSU
Power consumption	188.00 W/642.13 BTU/h (idle) 497.09 W/1697.8 BTU/h (max.)
Operating temperature	0°C to 40°C (operating) -20°C to +70°C (storage)
Humidity	10% to 90%, non-condensing

#### Product Certifications

Certifications	CB, CE, UL, FCC, ISSED, VCCI, CCC, KC*, BSMI, RCM, NOM, Anatel*
----------------	---

\* Certification may not be available from launch

Performance	XGS 6500*
Firewall throughput	115,000 Mbps
Firewall IMIX	60,000 Mbps
Firewall Latency (64 byte UDP)	5 µs
IPS throughput	48,000 Mbps
Threat Protection throughput	17,050 Mbps
Concurrent connections	39,900,000
New connections/sec	496,000
IPsec VPN throughput	-
Xstream SSL/TLS Inspection	16,000 Mbps
Xstream SSL/TLS Concurrent connections	768,000

\* Expected soon

Note: For performance testing methodology see [page 12](#)

#### Physical interfaces

Storage (local quarantine/logs)	2 x min. 480 GB SATA-III SSD HW RAID built into CPU
Ethernet interfaces (fixed)	8 x GbE copper 12 x SFP+ 10 GbE fiber*
Bypass port pairs	2
Management ports	1 x RJ45 MGMT 1 x COM RJ45 1 x Micro-USB (cable incl.)
Other I/O ports	2 x USB 3.0 (front)
Number of Flexi Port slots	2 + 2 for high-density module
Flexi Port modules (optional)	8 port GbE copper 8 port GbE SFP fiber 4 port 10 GbE SFP+ fiber 4 port GbE copper bypass (2 pairs) 2 port 40 GbE QSFP+ fiber 8 port 10 GbE SFP+ fiber High-density module (NIC): 12 port GE copper + 4 port 2.5 GE copper
Max. total port density (incl. use of modules)	68
Optional add-on connectivity	SFP DSL module (VDSL2) SFP/SFP+ Transceivers
Display	Multi-function LCD module

\* Transceivers (mini GBICs) sold separately